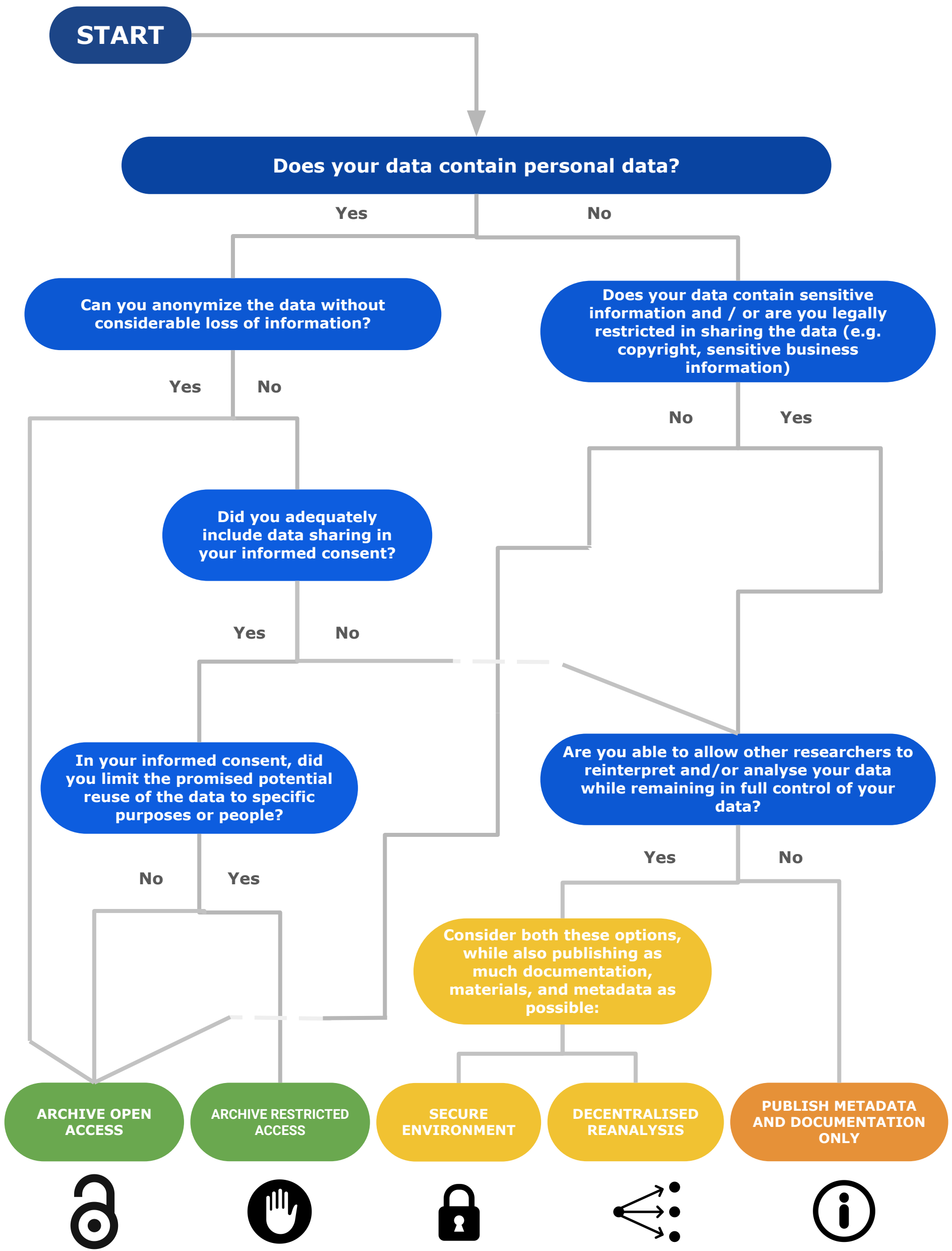


Qualitative data reuse decision tree

as open as possible, as closed as necessary



Qualitative data reuse decision tree

as open as possible, as closed as necessary



ARCHIVE OPEN ACCESS

Your data is not sensitive, and if your dataset contains personal data you have informed consent that allows the open sharing of data, or the personal data can be anonymised adequately.

Consider to archive your data open access in trustworthy digital repository like the DANS Data Station SSH. CC0 license is recommended. Include metadata and documentation to improve the reusability.



ARCHIVE RESTRICTED ACCESS

Your data contains personal information that you are not allowed to share open access, but your informed consent allows data sharing with specific conditions.

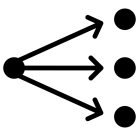
Consider to archive your data in trustworthy digital repository that allows restricted access, like the DANS Data Station SSH. Include metadata and documentation to improve the reusability. Establish a Data Access Protocol to accept or reject requests.



SECURE ENVIRONMENT

Your data is sensitive and/or contains personal data and you don't have informed consent to share it. Consider using secure environments where the data remains under your control.

Publish project documentation and metadata about your data to make it findable.



DECENTRALISED REANALYSIS

Your data is sensitive and/or contains personal data and you don't have informed consent to share it. Consider offering your data for decentralised reanalysis, where you reanalyse your data based on analysis protocols from other researchers.

Publish project documentation and metadata about your data to make it findable.



PUBLISH METADATA AND DOCUMENTATION ONLY

Your data is sensitive and/or contains personal data and you don't have informed consent to share it. Secure environments or decentralised reanalysis are not possible for you.

Publish project documentation and metadata about your project to make it findable.

This decision tree poster is part of the Guidebook: "Making qualitative data reusable" <https://doi.org/10.5281/zenodo.7777519>

Images credit:
Open Access icon: [Awesomecat713 / Wikimedia Commons / CC-BY-SA-3.0](#)
hand by Icon Island from [Noun Project \(CCBY3.0\)](#)
Lock by DC Icons from [Noun Project \(CCBY3.0\)](#)
Data Flow by SBTS from [Noun Project \(CCBY3.0\)](#)
Information by Wawan Hermawan from [Noun Project \(CCBY3.0\)](#)